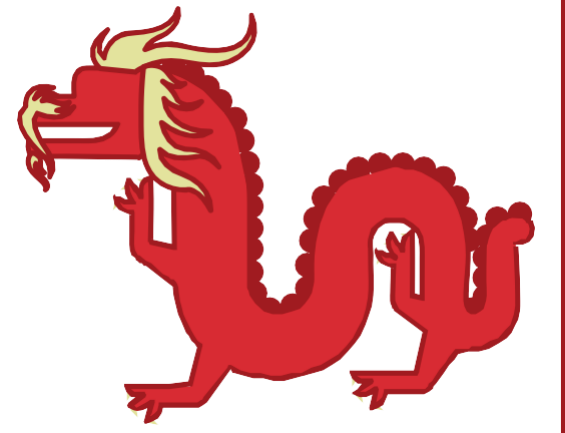


Shang Dynasty



Timeline

1,766 BC Emperor Cheng takes control	1,7000 - 1,500 BC The Shang Dynasty approved the use of bronze.	1,200 BC Most oracle bones found during King Wu Ding's rule.	1,200 BC Fu Hao, wife of King Wu Ding, dies.	1046 BC Cruelty and taxes cause the slaves to revolt. The Shang Dynasty ends
---	--	---	---	---

Key Vocabulary

Archaeological evidence - Remains from the previous civilisations which historians use to gather evidence

Artefacts - Objects found from the previous civilisations

Bronze, Jade and Pottery - The materials which craftsmen used

China - The country in which the Shang Dynasty occurred

Civilisation - The culture of people living together

Divination Ceremony - Bones had questions written on and were heated up to crack and reveal the answers

Merchant - A person who trades or sells items as a living

Oracle bones - Bones which were used to conduct a divination ceremony and speak to ancestors

Peasant Farmer - One of the lowest social classes, the peasant farmers spent all days in the fields growing and harvesting crops

Religion - How people believe and worship

Social Hierarchy - The different groups of people and their lifestyles



Key People

Fu Hao

- A wife of King Wu Ding
- Her tomb is the only one to be left untouched and unlooted



Shang Di

- Believed to be the God with the ultimate spiritual power



Cheng Tang

- The first King / Emperor of the Shang Dynasty



Wu Ding

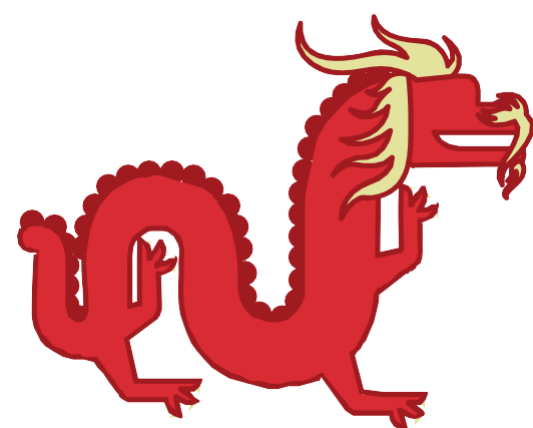
- The longest reigning king of the Shang Dynasty era
- His reign was seen as the climax of the Shang Dynasty



Learning Aims

By the end of this unit we hope children can:

- Explain when and where the Shang Dynasty occurred
- Explain the different social classes evidenced in the Shang Dynasty
- Describe the process of a divination ceremony and the use of oracle bones
- Name the key people and Gods who were worshipped
- Infer historical information from archeological evidence



Year 5 – Autumn Term

