

Newsletter 5th June 2026

Great Kingshill CE Combined School



Aspiring to be our best with kindness, respect and faith.

"Love your neighbour as yourself" Luke 10:25

The last half term!

Summer 2, the final half term of the academic year, is upon us, and with it the prospect of end of year performances, sports days and the colour run!

We hope that you all had a restful and enjoyable week away from school, and managed to make some memories in the beautiful sunshine! It has been lovely to welcome the children back in this week.

As you would expect, it's been a busy start. On Wednesday, we had our class photographs taken, and this morning Mrs Marks welcomed some parents for our monthly coffee morning.

Around the school, Year 2 went for a walk into the woods to identify some of the plants and flowers growing there - they even managed to dodge the torrential downpours! Year 6 have been in the hall as much as they can, with rehearsals beginning for their end of year

production; they did however find the time to pop out for a volleyball competition this afternoon.

As always, thank you for your continued support of the school.

With my best wishes,

Mrs Garner

Available support in school

Alongside your child's fantastic Class Teacher and Learning Support Assistants, we have our Designated Safeguarding Leads (DSL), Family Support Worker (Pastoral Team), and SENDCO (Special Educational Needs Co-Ordinator) alongside our busy office staff.

Designated Safeguarding Leads (DSL) - Mrs Best, Mrs Garner, Mr Hoddell, Mrs Farmbrough and Mrs Marks

SENDCO – Mrs Farmbrough

Attendance Officer and Family Support Worker - Mrs Marks

At our school, we are committed to ensuring that every child feels safe, valued, listened to and supported. A key part of this commitment is the Pastoral Support Team including the Family Support Worker and our SENDCO, who work closely with both the children and their families to provide guidance, reassurance, and practical support whenever it is needed.

Supporting Children

The Pastoral Team is here to help children navigate a wide range of experiences including challenging situations, emotions and feelings. School life, friendships and changes at home can sometimes feel overwhelming, and having someone to talk to away from their home can make a difference. Children can access support with:

- Understanding and managing their feelings and emotions.
- Coping with changes in family circumstances, such as a new sibling, separation, or moving home.
- Discussing any worries or concerns, whether they relate to school, friendships, or life outside the classroom.
- Building confidence and developing positive coping strategies.

This support is always offered in a safe, friendly, and confidential environment where children feel listened to and respected.

We also have our wellbeing board where children can help themselves to any of the resources or ask for help by filling in one of our forms and placing it in the post box or handing it to Mrs Marks or any adult in school.

Supporting Families

Parents are welcome to speak to the Family Support Worker about:

- Any concerns or worries about their child's wellbeing.
- Changes at home that may be impacting their child.
- Guidance on supporting their child's emotional or behavioural needs.

Concerns about their child's attendance and how to improve it

Regular school attendance is vital for a child's learning and development. The Family Support Worker/Attendance Officer can support families in overcoming barriers to attendance by listening to concerns that may be affecting attendance, offering practical advice or signposting to additional services and working alongside families and school staff to find positive solutions for all.

Working together, we aim to strengthen communication between home and school, ensuring the best outcomes for every child.

Safeguarding and Wellbeing

The safety and wellbeing of every child is our highest priority in school. All our DSL's (including the Family Support Worker) are available to discuss any safeguarding concerns, and the emergency school mobile (07921 394998) is always with a member of the DSL team even in the holidays or you can email safeguarding@gkcs.school. If there are any concerns regarding a child's safety or welfare, everyone is encouraged to reach out for support and guidance, and their concerns will be handled with care and confidentiality. Safeguarding is everyone's responsibility.

You can speak to one of our DSL team or call First Response on the following numbers:

- 01296 383962 (9:00 - 17:30 Monday - Thursday and 9:00 - 17:00 Friday).
- Out of hours and weekends 0800 999 7677 (after 17:30/17:00 and weekends).

SENDCO

Our SENDCO (Special Educational Needs Coordinator) is responsible for ensuring that children with special educational needs and disabilities receive the support they need to learn effectively in our school. They identify pupils' needs, coordinate additional support and interventions, and work closely with teachers and LSA's to adapt teaching approaches. The SENDCO will also liaise with parents, external agencies and professionals, and monitors pupils' progress so all children in our school can succeed.

Attendance

Attendance Really Does Matter!

If your child is absent from school, please email attendance@gkcs.school; please do not email the school office.

Tips for Improving Punctuality

- **Prepare the night before:** Lay out clothes, pack bags, and check homework to avoid last-minute stress.
- **Set a consistent bedtime:** A good night's sleep helps mornings run smoothly.
- **Use alarms and reminders:** Set alarms for both waking up and leaving the house.
- **Plan for extra time:** Aim to leave 10 minutes earlier than needed to allow for unexpected delays.
- **Create a calm morning routine:** Avoid screens before school and keep breakfast simple.
- **Talk about why punctuality matters:** Explain how being on time helps learning and avoids missed opportunities.
- **Use Breakfast Club if mornings are tight:** Our Breakfast Club is open from **7:30am every day**, providing a safe and calm start to the day.

Exceptional Request for Leave of Absence

Leave of Absence Reminder

We would like to remind all parents and carers that **requests for leave of absence should only be made in exceptional circumstances**. Unfortunately, we are **unable to authorise family holidays or extended visits abroad** during term time.

Please be aware of the following important points regarding unauthorised absences:

- **Unauthorised absences are reviewed on a “10 in 10” basis**—this means that if a child accrues **10 unauthorised absences within a 10-week period**, the school is **required** to refer the case to the Local Authority.
- This review process runs **concurrently throughout the school year**; it is not reset at the start of each academic year.
- While the school makes the referral, **the decision to issue a penalty notice lies with the Local Authority’s Attendance Team**.
- If you have previously received a penalty notice, please note that **you will not be eligible for the reduced rate payment option**.

We understand that family circumstances can be complex, and we are here to support you. If you have any questions or need further clarification, please contact Mrs Marks on attendance@gkcs.school

Thank you for your continued cooperation in helping us maintain high standards of attendance and punctuality.

Parking in the front car park

A polite reminder that the front car park is only to be used for blue badge holders, and is for drop-off and collection only. As you are all aware, the roads surrounding the school become very busy at these times, so if you could leave the car park as quickly as possible once your children have been dropped off or collected it would be greatly appreciated.

Please could all blue badge holders bring their badge in to the office at some point over the next week so that Mrs Foy can take a copy of the details and keep our records up to date. Thank you for your cooperation with this.

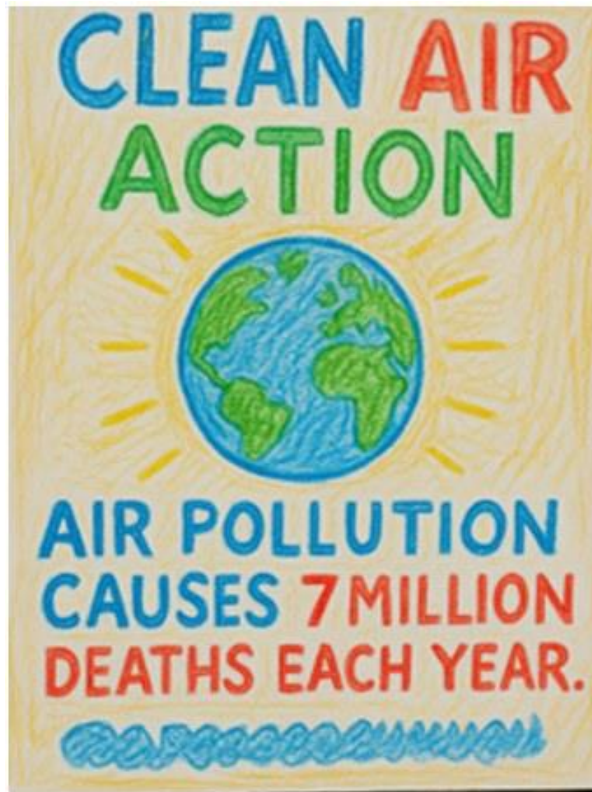
Superkind

June Superkind Challenge

This month, our Superkind Challenge is linked with **Clean Air Day** which is celebrated on 18th June. This is a time to learn about air pollution and take action to help everyone breathe clean, healthy air. In Collective Worship next week, we will think about why clean air is important and what is making our air dirty.

We would like you to take action by creating posters to raise awareness about clean air to display around the school. Posters can grab people’s attention and make them stop, think, and care. They can spark conversations and inspire others to get involved.

- 💬 Choose a clear and powerful message about clean air.
- 🗨️ Use bold colours and large text so people can read it from a distance.
- 🖼️ Include an image or symbol that represents clean air or pollution.
- 🌟 Keep it simple – one main idea per poster.
- 📣 Add a call to action: what should people do after seeing your poster?



If you decide to take action, please bring your poster to my office so that I can award 'Poster Maker' stickers!

Mrs Gandini 😊

Water Safety

During the recent hot spell of weather, several young people tragically lost their lives whilst swimming in open water such as lakes, reservoirs and rivers.

Swimming is of course, a part of our national curriculum, and our children receive fantastic swimming lessons from fully qualified swimming teachers at Risborough Springs Leisure Centre. As a part of these lessons, the children learn about what to do if they get into difficulty in the water, and take part in a self-saving activity whilst clothed.

To go alongside this, Paul from Risborough Springs will be coming to lead a collective worship on water safety for years 5 & 6 later this term.

Football at GKCS: the end of season review!

The girls' first season playing competitive football was a tough one, with some success in playing some good football at the Disraeli tournament, scoring our very first goal at home and winning some friendly matches in tournaments at Piper's Corner. Very proud of them all.

With a few injury issues and plenty of debutants, we finished fourth in the league, and are hoping to see a steady development next season. Great first Season, girls. You should all be really proud of yourselves as you represented our school and values to the highest possible standard.

The Year 5 U10 boys team entered the cup competition and went on a run all the way to the semi-finals with some absolutely world class goals, only to lose in extra time. Gutted was a feeling that didn't come close, and the emotion of the game was there for all to see. Terrific passion and team spirit throughout the campaign. We can use this as a platform for next season when we enter the league. Well done, boys!

The Year 6 U11 boys team played well all season and were playing some incredible football. We got knocked out of the cup in the first round, but this gave an opportunity for some other players to represent our school. The league was a tough battle, and we won three games, losing to the eventual champions 1-0 in a close game. This had us finishing second, and I am immensely proud of their achievements.

TEAM	P	W	D	L	GF	GA	Diff	Pts
Widmer End	5	5	0	0	17	2	+15	15
Great Kingshill	5	3	0	2	14	6	+8	9
Highworth	5*	3	0	2	16	9	+7	9
Manor Farm	5*	2	0	3	11	5	+6	6
Hazlemere	5	2	0	3	13	9	+4	6
Kings Wood	5	0	0	5	0	40	-40	0

Some incredible performances from everyone involved, and let's look forward to next year.

Come on You Kings!

Sports Days

Summer Term means Sports Days, and teachers and children alike are gearing up for the events!

The dates for the Sports Days are as follows:

Thursday (afternoon) 25th June: Preschool & Reception

Friday (morning) 26th June: Years 4, 5 & 6

Friday (afternoon) 26th June: Years 1, 2 & 3

The exact timings and access arrangements for coming into school will be shared with you very soon.

Summer 2 Dates

Below is a list of dates for upcoming events this half term. Please note that this is a working document, and timings may be updated as the term progresses.

Monday 1 st June	08:30	School opens for Summer 2
Wednesday 3 rd June		Class photographs
Friday 5 th June	09:00	Coffee Morning
Tuesday 9 th June	18:30	Mary Poppins Jr performance
Thursday 11 th June	09:30	Prospective open morning (Preschool & Reception)
Thursday 11 th June	18:30	Mary Poppins Jr performance
Friday 19 th June		PTA Mufti Day – Children's Tombola
Friday 19 th June		Year 2 trip to Whipsnade Zoo
Thursday 25 th June	pm (timing TBC)	Preschool & Reception Sports Day
Friday 25 th June	am (timing TBC)	Years 4, 5 & 6 Sports Day
Friday 25 th June	pm (timing TBC)	Years 1, 2 & 3 Sports Day
Sunday 28 th June	12:00	GKCS Funfest!
Thursday 2 nd July	18:30	Year 6 performance
Friday 3 rd July	09:00	Coffee Morning
Friday 3 rd July		Year 1 trip to Mop End
Friday 3 rd July		Year 2 Australia Day
Friday 3 rd July		Year 4 Ancient Greece Day
Tuesday 7 th July		Transition Day
Thursday 9 th July		Reports
Thursday 9 th July	TBC	PTA Discos
Friday 10 th July		Inset Day – school closed for all pupils
Wednesday 15 th July	pm (timing TBC)	Progress & Values Awards Ceremony – invitation only
Tuesday 21 st July	pm	Colour Run
Wednesday 22 nd July	12:30	Year 6 Leavers' Service
Wednesday 22 nd July	13:30	School closes for the summer holidays